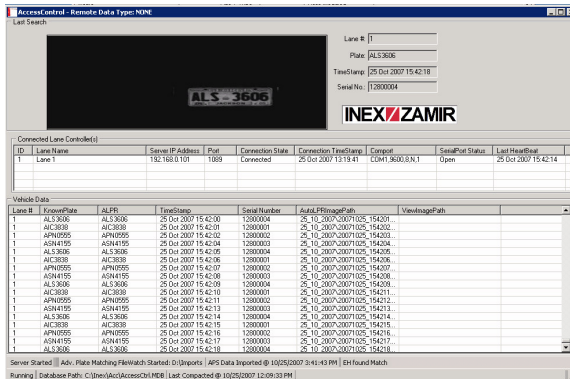


## Features

- Accurate license plate recognition regardless of time of day, speed of vehicle or climate
- The license plate becomes a credential; apply access control rules based on the vehicle.
- Seamless integration: all user data is stored and maintained in your present Access Control System.
- Wiegand format output is available for integration with most access panels.



Access Control interface, Serial Number is the Wiegand value sent to access panel.

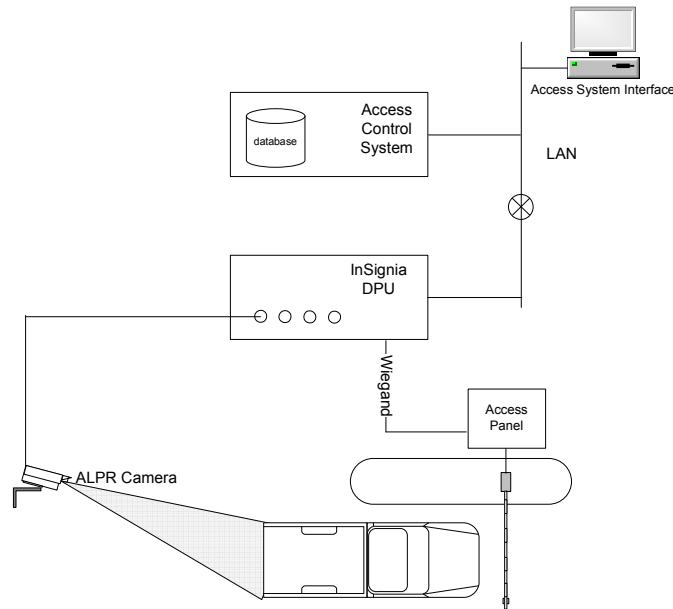
**Access Control Integration with InSignia® provides the ability to use a vehicle license plate to grant or deny access.**

INEX/ZAMIR's InSignia® - *known around the world as the acknowledged software solution standard for identifying vehicles by reading their license plates* – now can be integrated into your existing access control solution. The ability to allow or deny access to a facility based on the vehicle's license plate is available today.

A vehicle approaching a gate presents a seamless way for individuals to enter a facility. Since every vehicle already has a unique identifier by way of the license plate, a solution using INEX/ZAMIR's ALPR (Automatic License Plate Reader) will allow you to easily control access on a vehicle to vehicle basis.

The INEX/ZAMIR approach integrates with your existing Access Control infrastructure so it is not necessary to create a standalone system for the ALPR solution. All of the data already resides on the system you are familiar with, your existing Access Control system.

INEX/ZAMIR solutions have been installed worldwide for over 14 years. Contact us today to discuss how you can use ALPR to improve your security infrastructure.



**A typical deployment integrating an InSignia ALPR system with an Access Control system** - In this example there is a single gate with an ALPR camera. The license plate is read as the vehicle approaches the gate arm. The resulting plate number is matched against the list of license plates entered in the access control system. On a match, the corresponding user ID number is sent in Wiegand format to the access panel associated with the gate. The access control system then controls whether the gate is opened.

## System Requirements:

### InSignia Modules

|                  |  |
|------------------|--|
| Event Handler    | Image handling and ALPR processing                             |
| Device Manager   | Configuration tool   |
| AccessControlApp | Access Control Integration application                         |
| IZ Web Tools     | Optional web interface for system configuration and monitoring |

### LPR Camera

|                |   |
|----------------|---|
| HY ALPR Camera | Pulsed Infrared camera specifically designed to provide images used with LPR systems. |
|----------------|---|

### ALPR Processor

|  |   |
|--|---|
| Rack or panel mount data processing unit | Windows XP platform providing real-time ALPR image processing |
|--|---|

### Supported Access Control Systems

|  |   |
|--|---|
| Lenel, ABDI, PCSC                        | Most SQL, Oracle or proprietary systems can be easily supported |
| Call for details on other manufacturers. |   |